



Liveseeding_E-learning

Module 14, Exercice 14.2

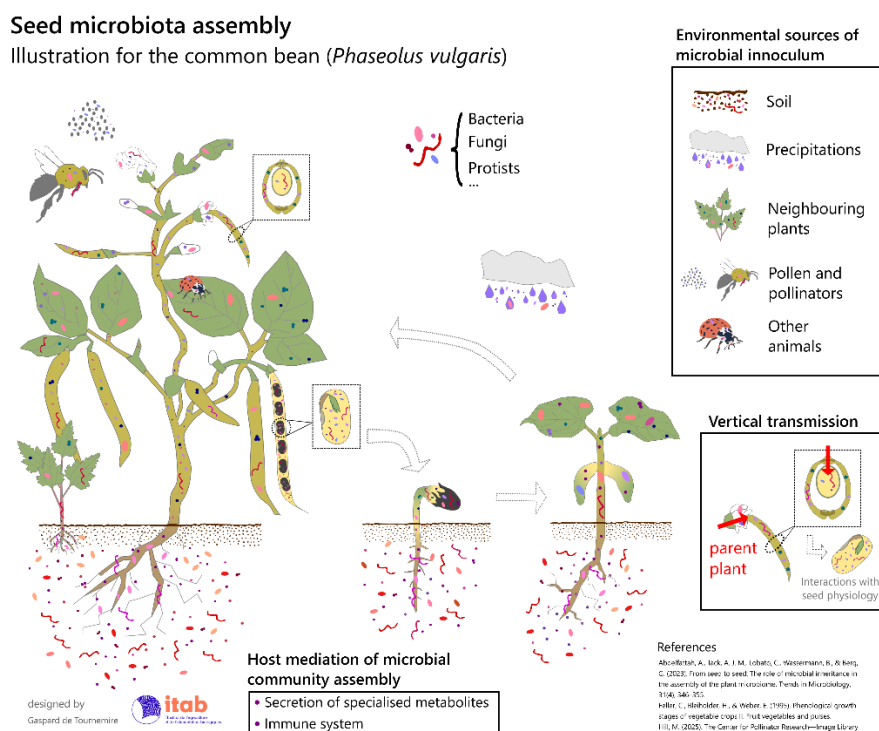
Authors: Gaspard Detournemire (ITAB, the french organic farming institute)

Agronomic practices and seeds' microbial communities

1.1 Matériel

To complete this exercise, you will need to study the figure : [here](#). Print it out if necessary.

Take a close look at this figure **summarizing the different elements of the complex assembly process shaping the composition of seed microbiota.**



1.2 Instructions and questions

Take a close look at this figure **summarizing the different elements of the complex assembly process shaping the composition of seed microbiota**.

Based on these, make a list of at least 10 agronomic practices that may affect seed microbiota assembly.

- 1
- 2
- 3
- 4
- 5
- 6
- 7
- 8
- 9
- 10

Knowledge on seed microbiota and associated functions is not (yet?) advanced enough to predict whether these practices have positive or negative effects. But just being aware that **agronomic practices in seed propagation contribute to shaping the seeds' microbial communities** can be fascinating.